

Transition to Care - Next Best Step

Introduction

As part of discharge planning in the ED for patients who use substances, it is important to include referrals for substance use and overdose prevention support.

Providing patients with information about options for care and/or supporting their care plan as they transition to the community can be lifesaving, particularly if the ED is the only point-of-healthcare contact they have accessed.

Briefly ascertain needs and desires of your patient before arranging follow-up

Are they interested in the following:

- Opiate agonist therapy (OAT) starts or need OAT continuation in the community?
- Harm reduction services?
- Withdrawal management (detox centers)?
- Bed-based treatment
- Supportive recovery?
- Harm reduction services?
- Support to navigate care in the community?
- Indigenous cultural support?
- Social support?

Process for Referrals

For sites using Cerner: Electronic referrals to Overdose Outreach Team

For sites not using Cerner consider the following:

- What is the process of communicating referral requests?
- How is this flagged?
- Who is this flagged for to make the referral?

The Regional Addictions Program will work with the EDs and community substance use services to develop a referral process if needed.

Referral Pathway Process Map

Please see next page for a generic referral pathway process map.



The Regional Addiction Program will work with EDs to develop a referral pathway process map specific to each Community of Care.

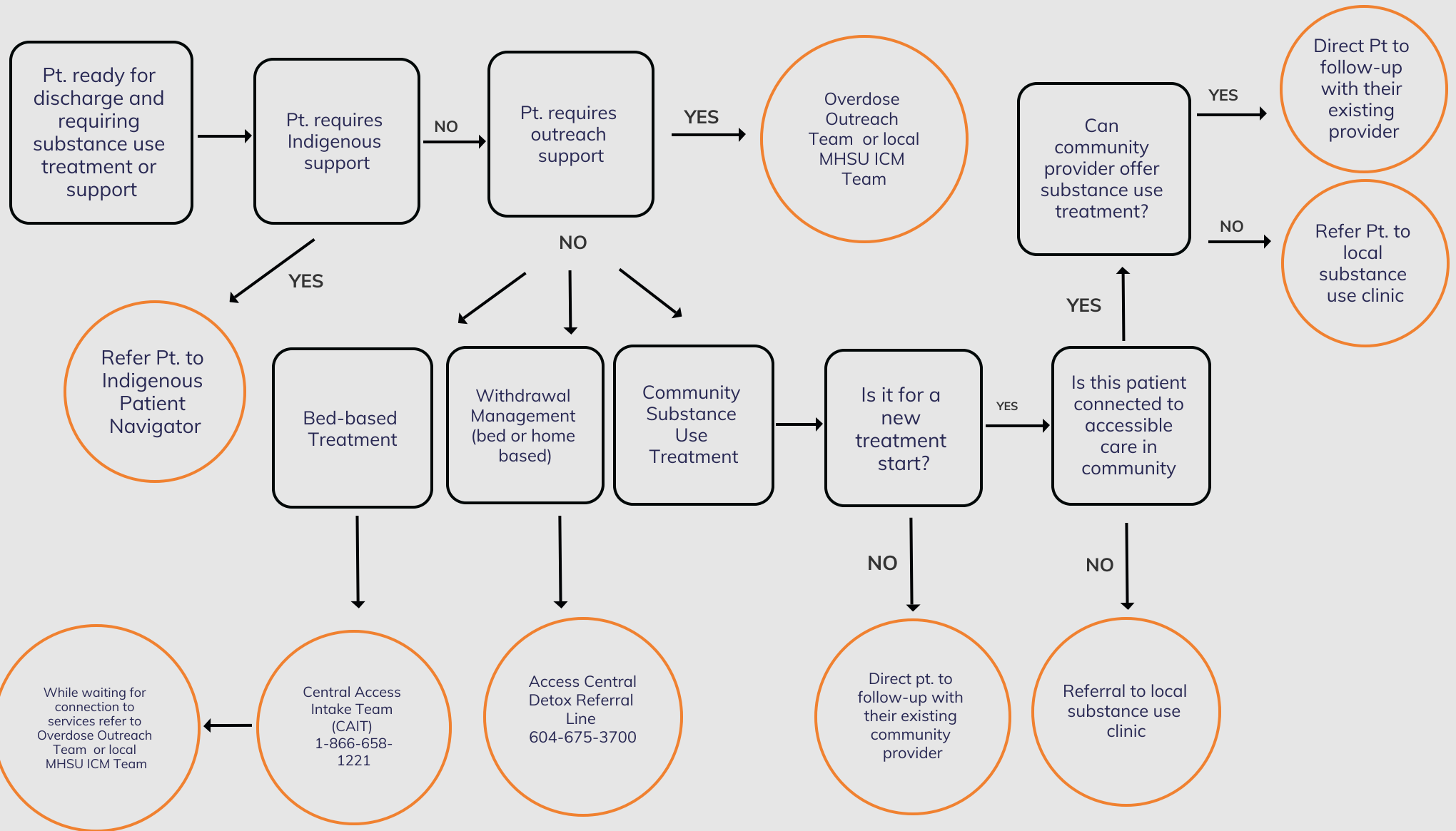
Returning to the ED

To ensure patients connect with the referred services in a timely and efficient manner, the community service will follow up with patients shortly after discharge from the ED.



As a last resort if follow-up is difficult to arrange, invite your patient to return to ED for subsequent OAT doses (if applicable or for further linkage to care by presenting to ED during weekday daytime hours when maximum resources are available.

Transition to Care - Sample Referral Process Map



The Regional Addiction Program will work with the ED to develop a process map specific to the Community of Care