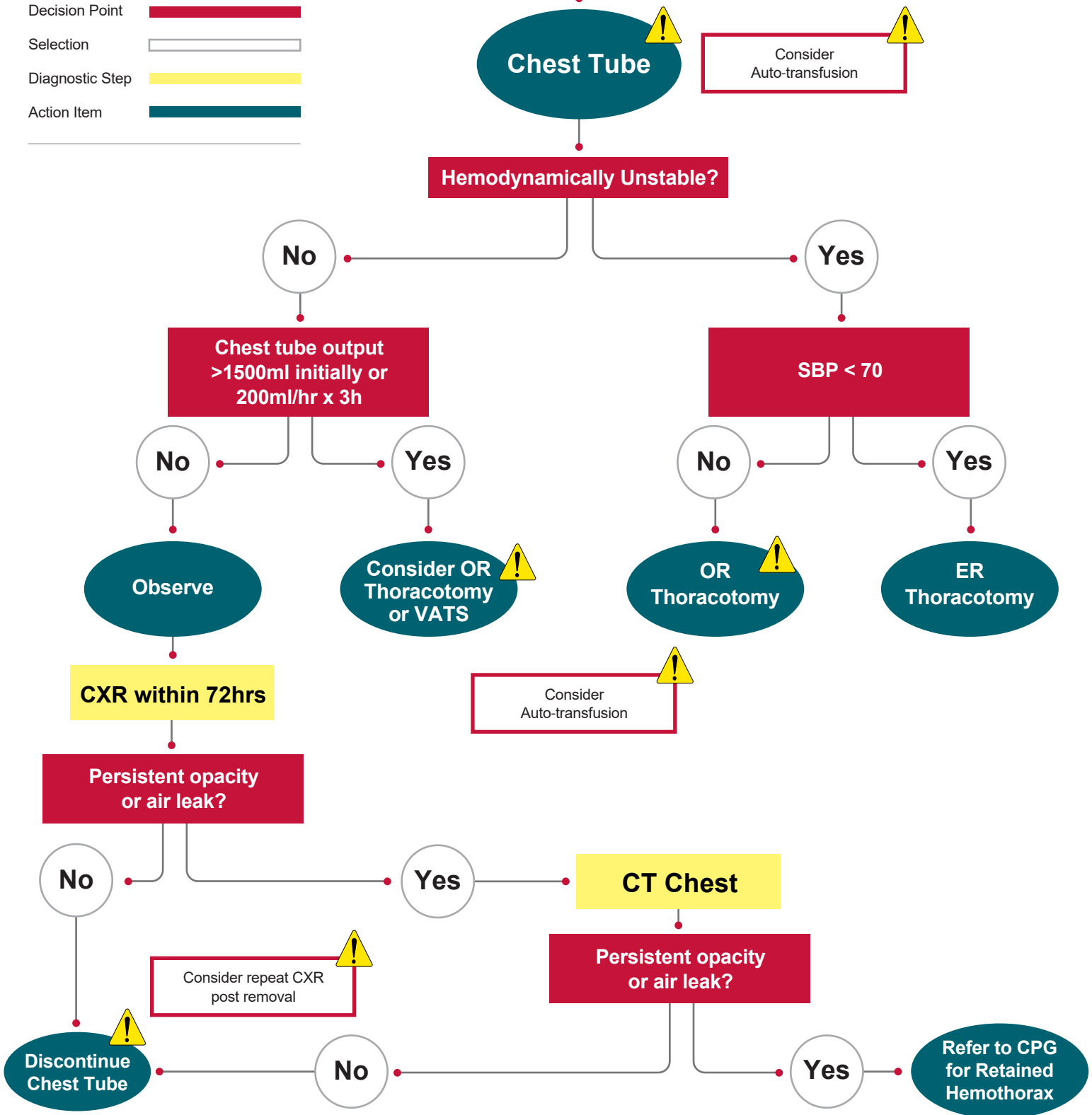


Hemothorax

(Diagnosed clinically or by CXR, CT, U/S)

LEGEND

- Decision Point
- Selection
- Diagnostic Step
- Action Item



Moore FO, Duane TM, Hu CKC, Fox, AD, McQuay N Jr, Lieber ML, et al. Presumptive antibiotic use in tube thoracostomy for traumatic hemothorax. Journal of Trauma and Acute Care Surgery. 2012 Nov;73:S341-1.

Mowery NT, Gunter OL, Collier BR, Diaz JJ Jr., Haut E, Hildreth A, et al. Practice Management Guidelines for Management of Hemothorax and Occult Pneumothorax. The Journal of Trauma: Injury, Infection and Critical Care. 2011 Feb;70(2):510-8.