



Richmond Community of Care

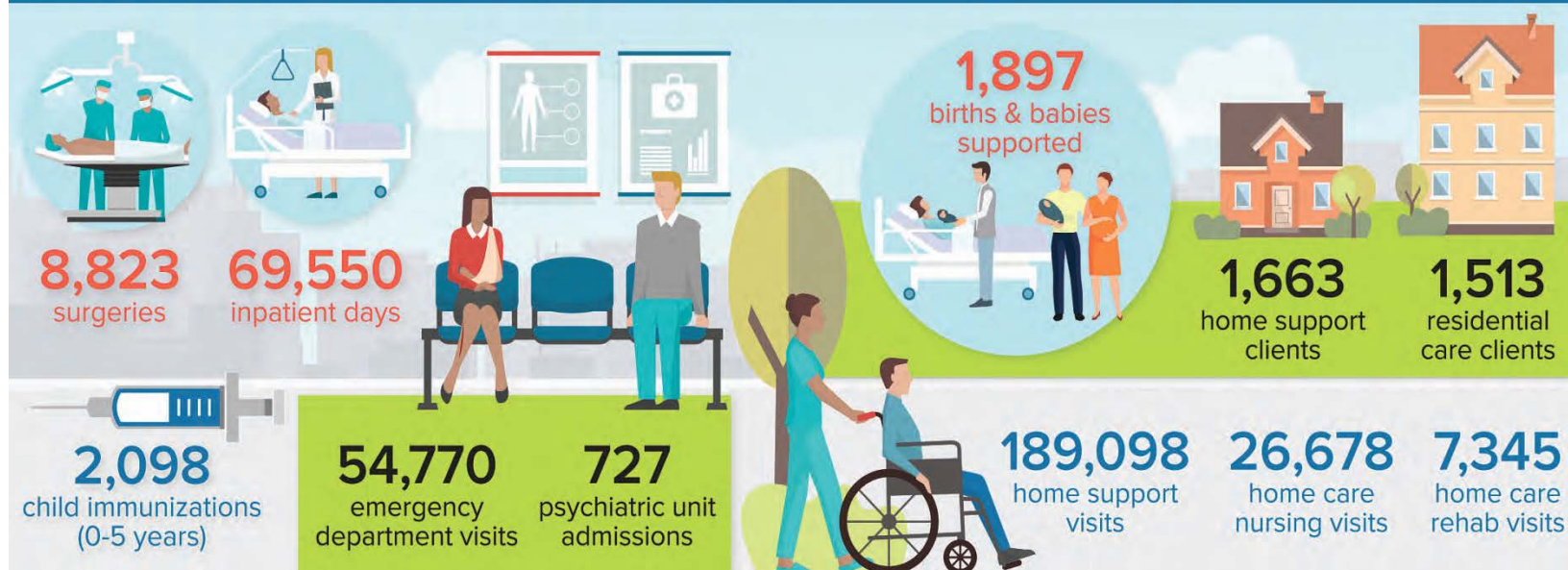
Your Health. Your Health Care System.

February 22, 2018

Serving Our Community

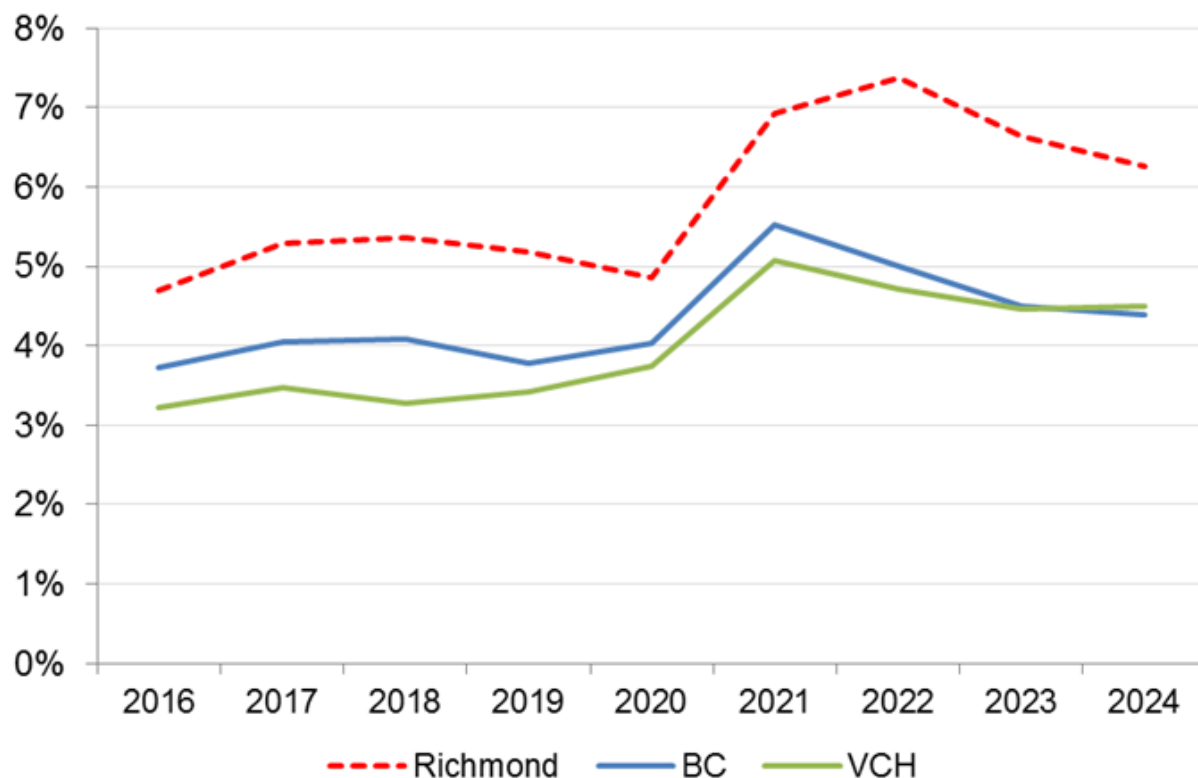
A LOOK INSIDE VCH Richmond

VCH Richmond contributes to the health of 213,891 Richmond residents by providing a range of direct and contracted health care services that support people from birth to end of life, from hospital care through community, public and environmental health, and residential care.



We're growing & aging

Growth Rate of 75+ Population



Primary Care Home



Transformation & integration of community services



Residential Care



Fraserview Lodge Expansion:
Completion 2020

Community Health Access Centre (CHAC)



Richmond Hospital–North Tower



Thank You

Nellie.Hariri@vch.ca

Natalie.McCarthy@vch.ca